

# Τροϊανή Ἴσση

## Βυρνητηγ Μαη 2011 "Ριτες φf Ρασσαγε"

*A giant horse stands, dark and menacing. Nearly breaking four stories at its maximum height, the creature casts an ominous sun shadow in the day and glows malevolently from its core at night.*

*Created by a group of artists and collaborators from around the world, the magnificent structure will be installed for Burning Man's 2011 theme, Rights of Passage.*

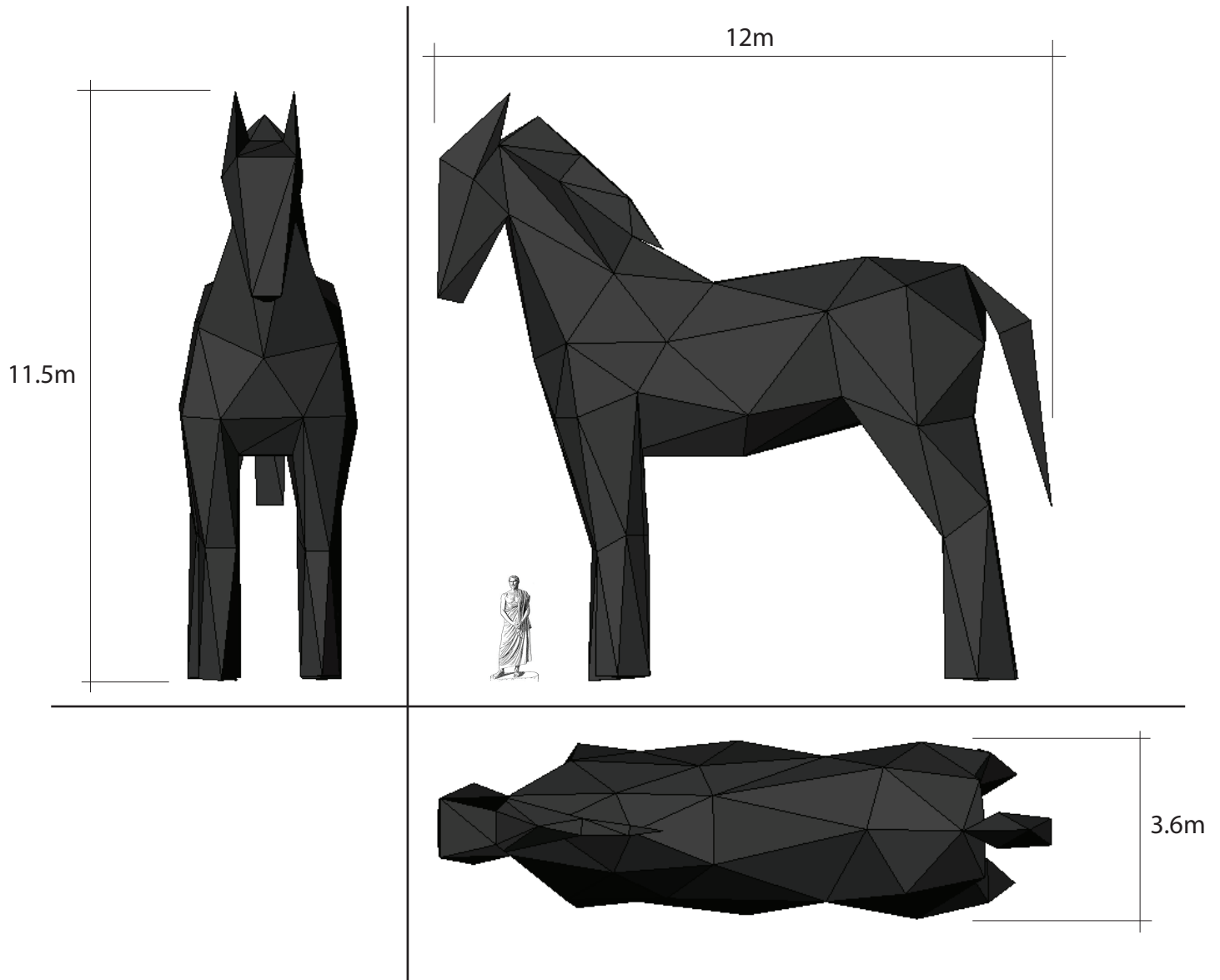
*On the fifth evening of the festival a 300 member procession will cart the installation to it's ceremonial place of honor on the open Playa for an exultant celebration.*

### *What we are looking for:*

- Suggestions for CONSTRUCTION METHOD
- Suggestions for MATERIAL
  
- STRUCTURAL DESIGN DRAWING
  
- Estimations of material needs / material costs
- Estimations of construction work hours
- Estimation of sculpture weight (and how many men it will need to tow it)

CONCEPTUAL DESIGN / SIMPLE SCHEMATICS

Nov. 16th, 2010, trojan.evsc.net



### *Conceptual Design, Dimensions and Simple Schematics*

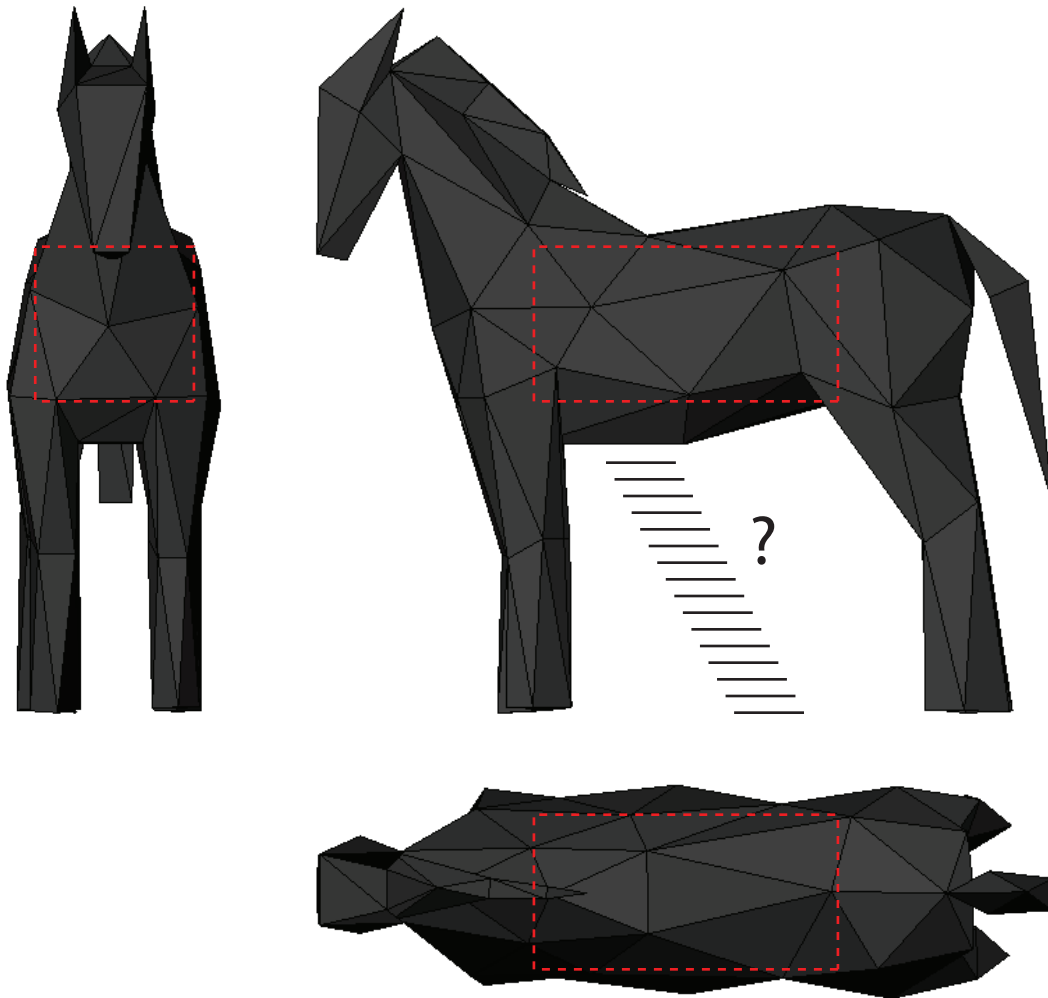
- about 12 meter high horse sculpture
- surface is constructed of polygons (triangle panels)
- outer surface material has to be wood
- inner structure material undefined

### *Unique Features*

- mobile / human powered
- pyrotechnics / mane of fire
- lighting design / red glow accentuates polygon surface

### *Environmental Considerations*

- strong wind gusts
- soft sand dunes (transportation hazard)



### *The Inner Space and Accessibility*

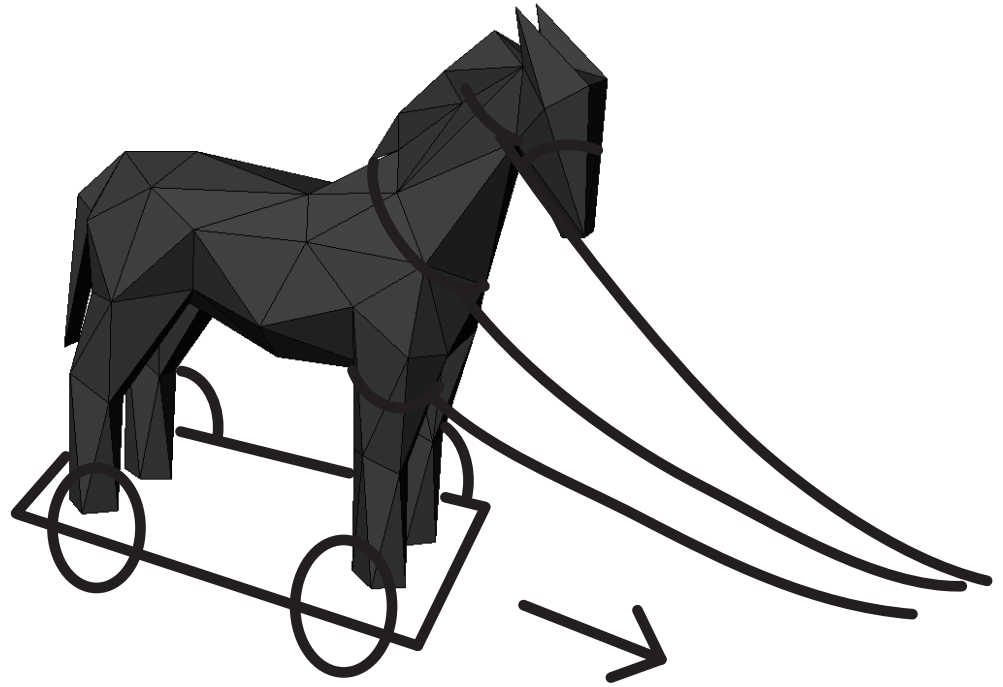
- hidden room inside the horse's belly
- room accessible from outside
- measurements of room depend on overall structure (as big as possible)
- the room will be used as a bar and must hold furniture, equipment and several people at once
- the walls of the room don't have to be level / even and can be molded according to the outside structure.

### *Safety Concerns*

- entering and exiting the interior
- flammable liquid stored inside; flames lit externally
- STRUCTURAL STABILITY!!!

## *Mobility*

The sculpture should be constructed onto a movable platform, so it can be towed and moved across the desert (SOFT SAND DUNES !!!).



## *Pre-Fabrication and Assembly*

The construction of the sculpture will happen offsite. It will be necessary to reassemble all the components after transportation to the final site (Black Rock City).

We imagine a method that allows the attachment of the wooden triangle panels onto a inner 'wireframe' structure.

