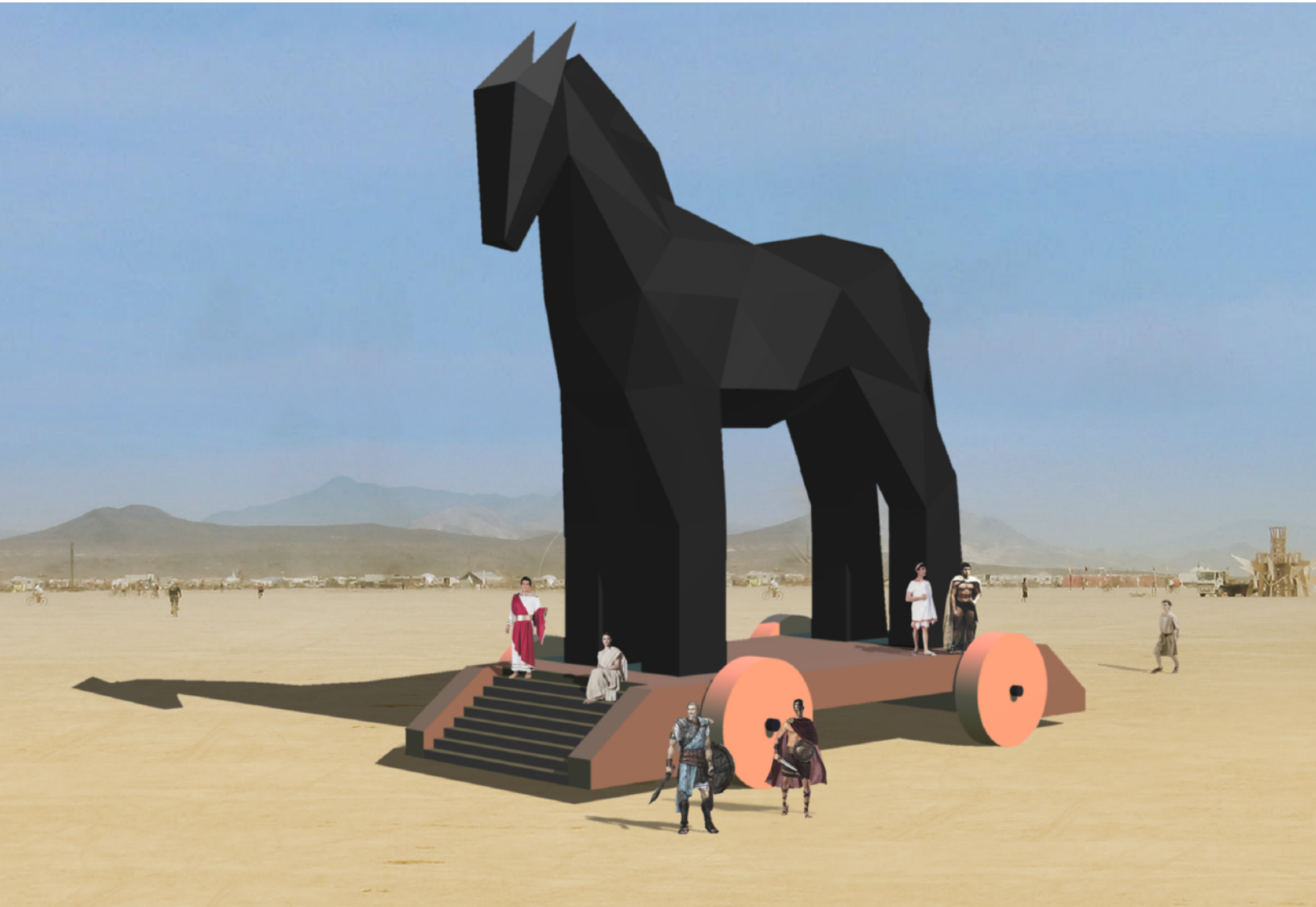




BY NIGHT

Τρόϊα Horse

trojan.evsc.net / trojan@evsc.net

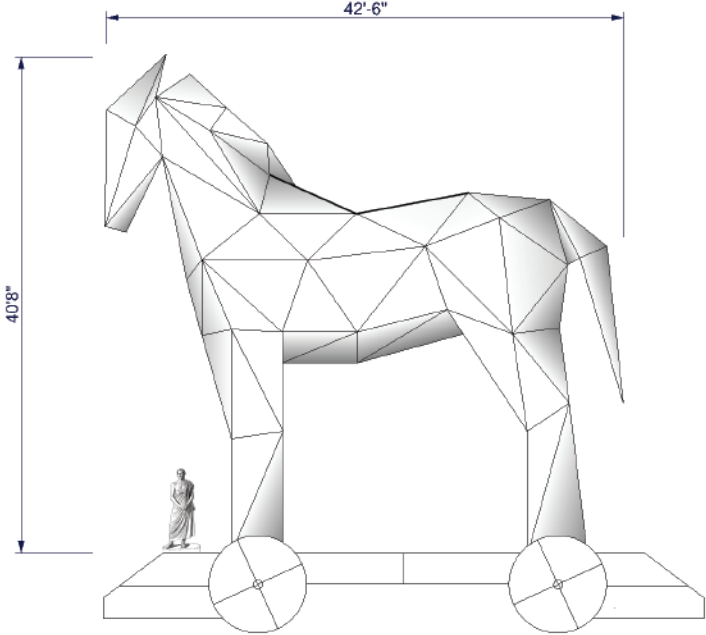
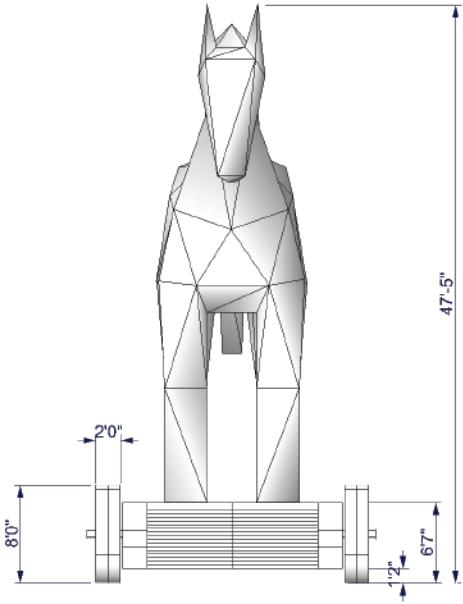
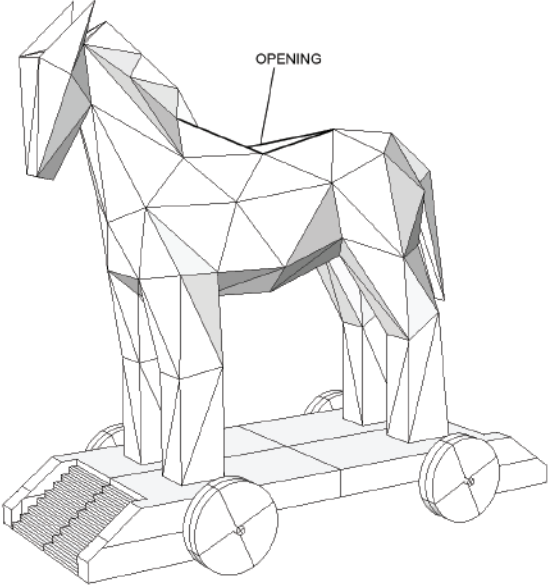
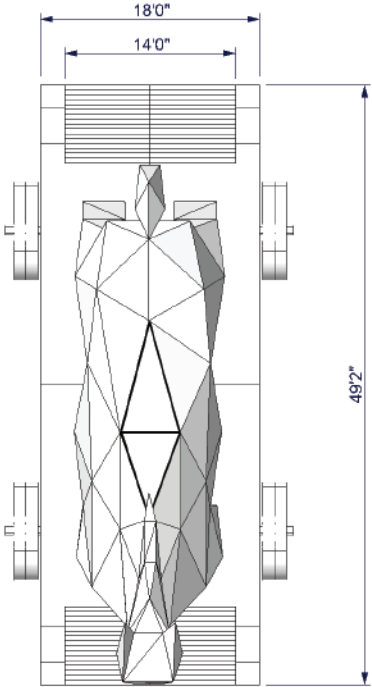


BY DAY

Τρόϊα Horse

trojan.evsc.net / trojan@evsc.net

Trojan Horse Schematic and Dimensions



SCHEMATIC + DIMENSIONS

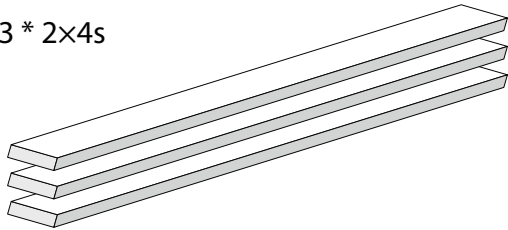
Τροϊανή Ἴσση

trojan.evsc.net / trojan@evsc.net

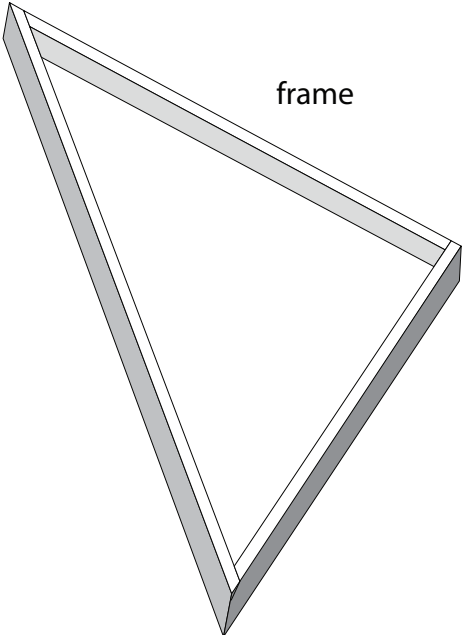
Cladding (1)

The basic unit of the Trojan Horse is a triangle composed of three joined 2x4s. These will be built in San Francisco as will the panels which will not be placed on top of the triangles until final assembly on the playa (the triangles must remain completely open to be strapped together).

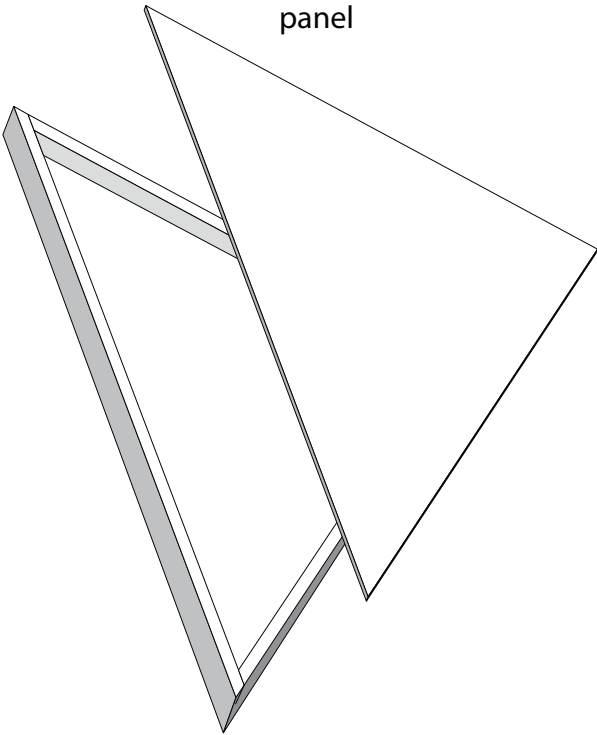
3 * 2x4s



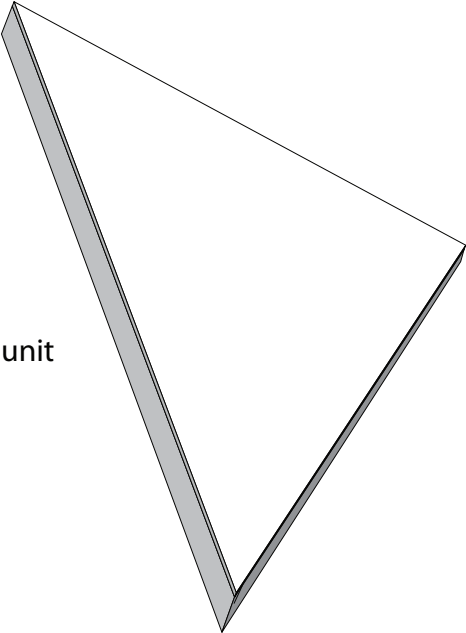
frame



panel



finished unit

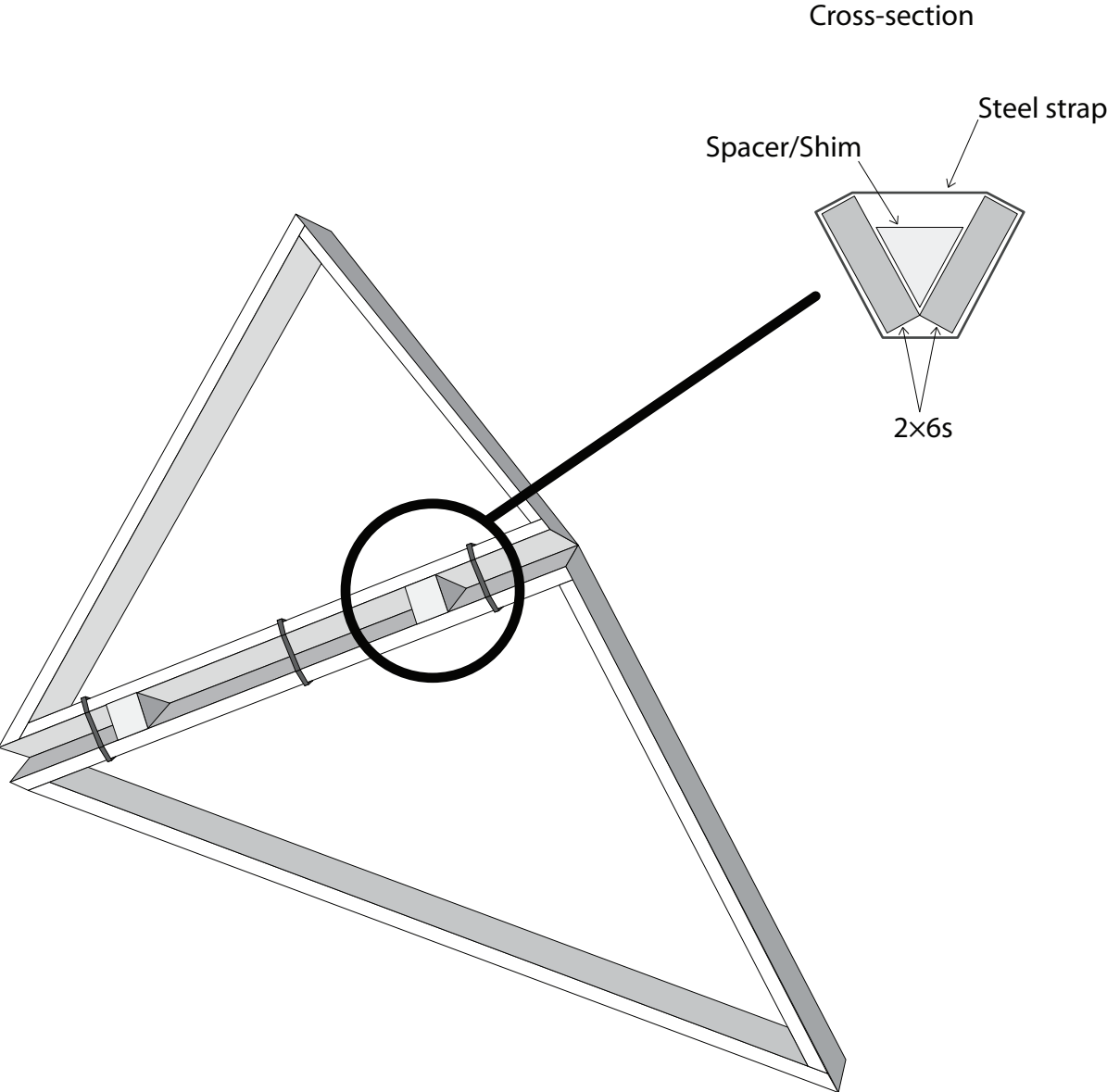


CLADDING (1)

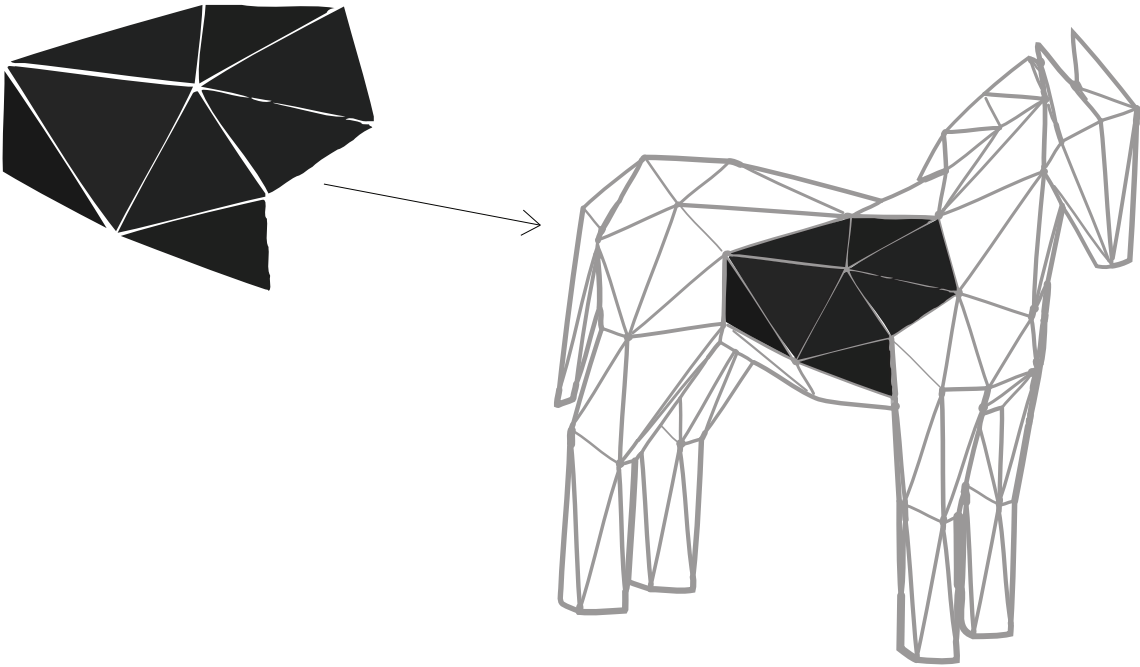
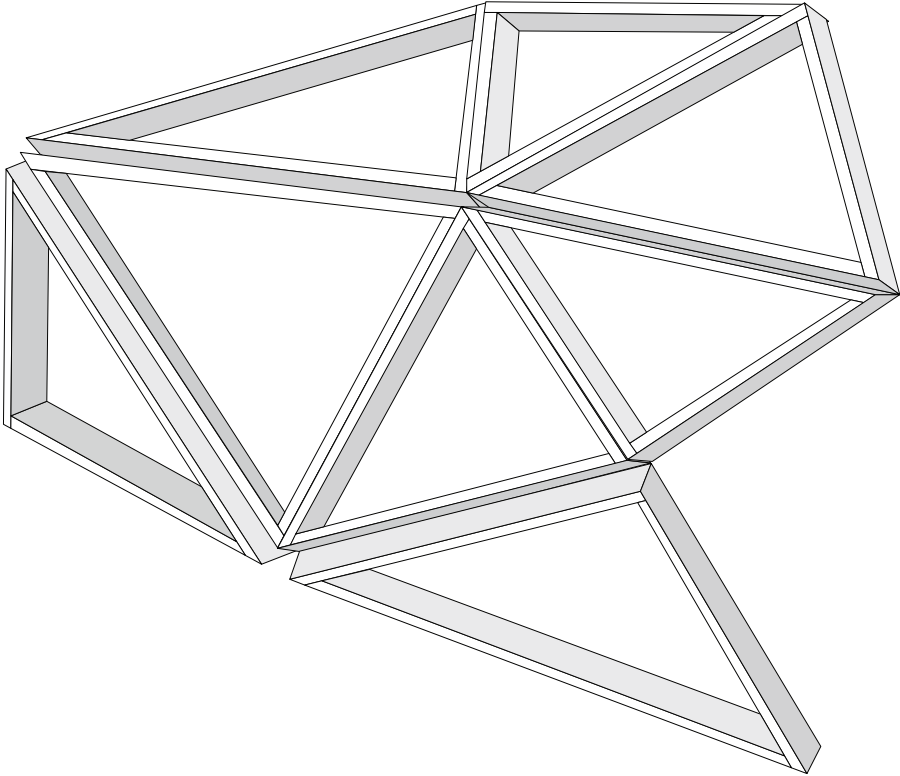
Trojan Horse

trojan.evsc.net / trojan@evsc.net

Cladding (2)



Cladding (3)



CLADDING (3)

Τρόϊαν Ηορσε

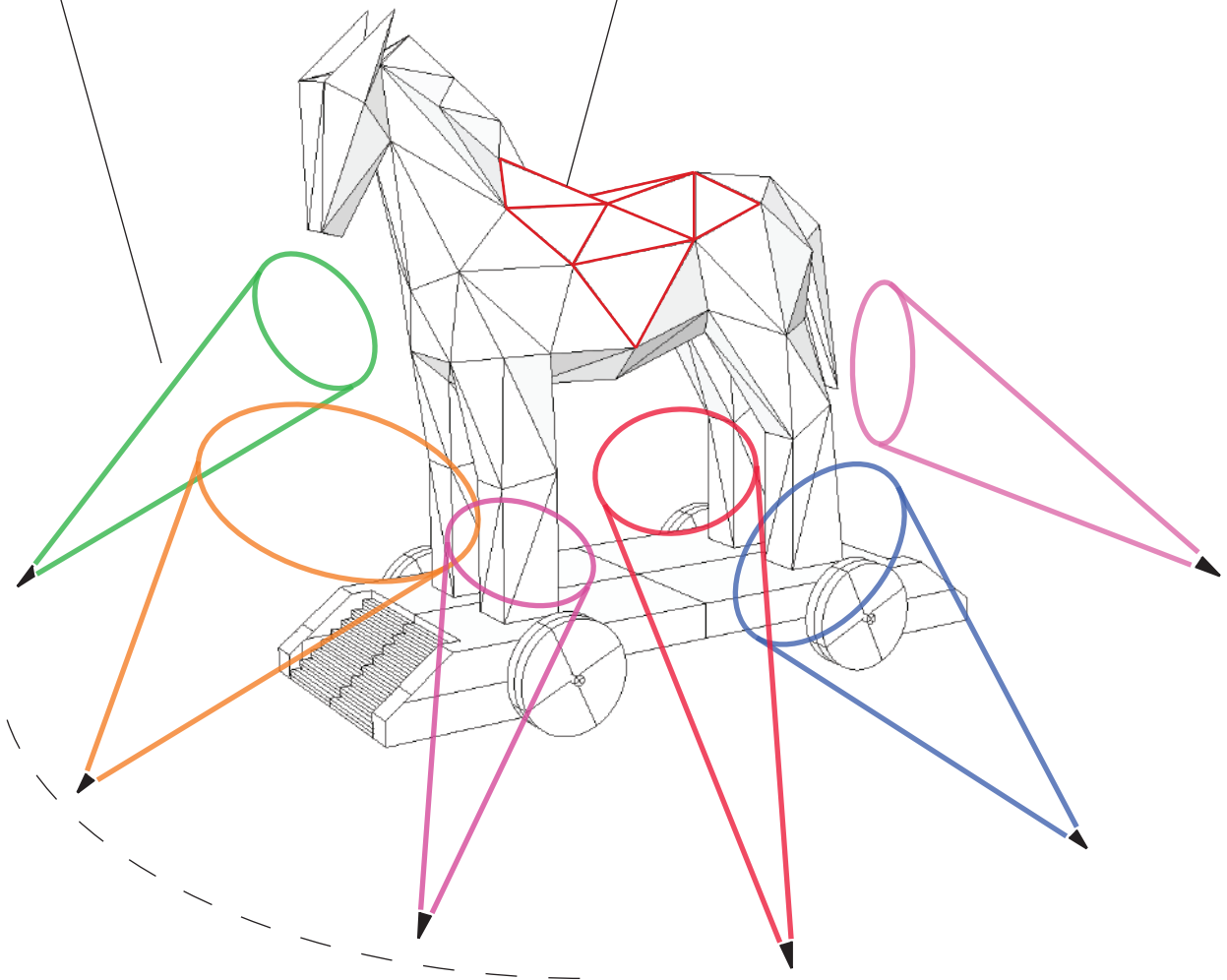
trojan.evsc.net / trojan@evsc.net

Lighting Schemes

At night, the horse will be heavily illuminated. Two different lighting schemes--individually and in combination--will accentuate the horse's malevolent presence on the playa.

(1) An array of multi-color spots are placed around the horse.

(2) EL-wire placed along the edges of all the skin panels.



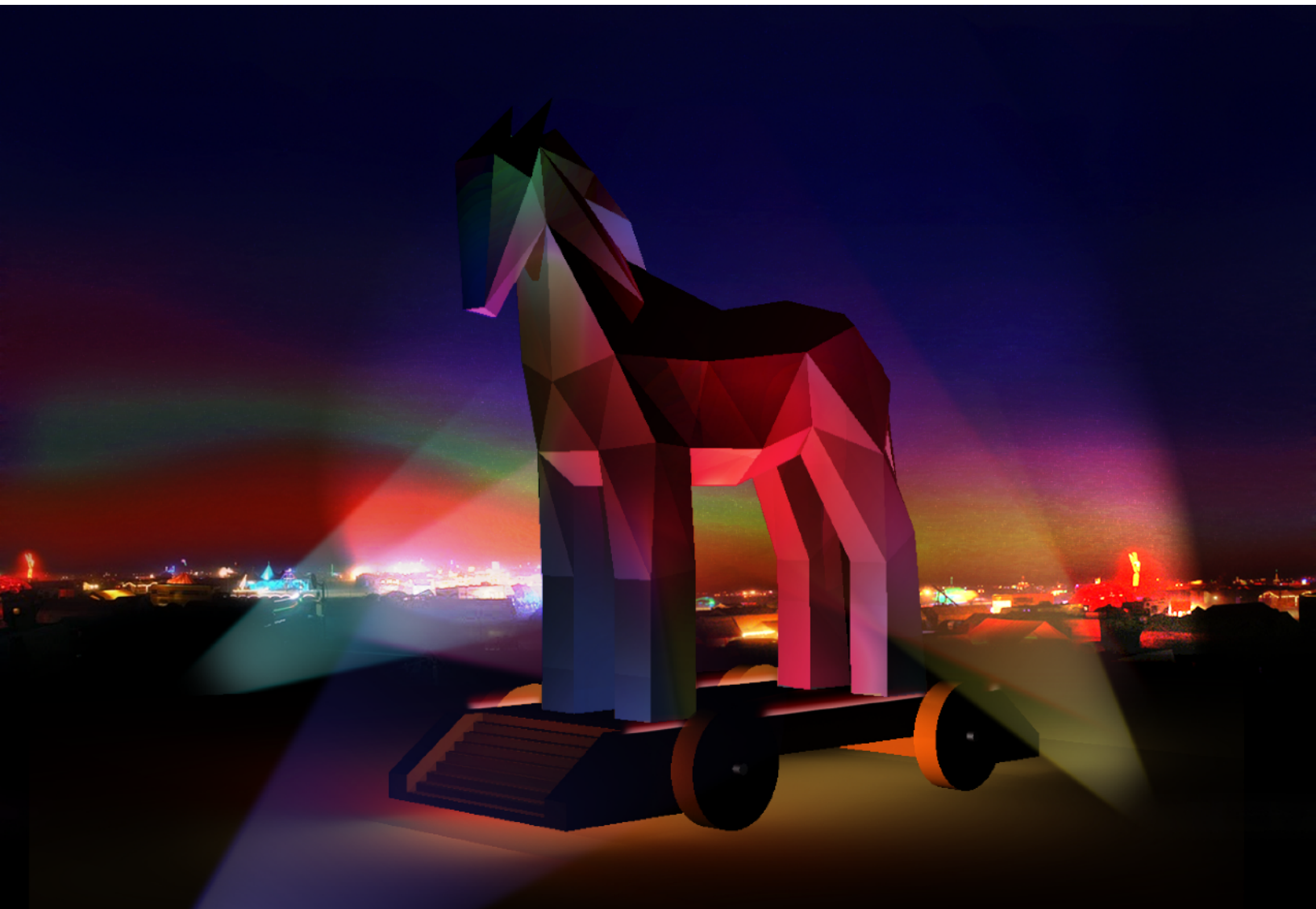
LIGHTING SCHEMES

Τροίαν Ηorse

trojan.evsc.net / trojan@evsc.net

Lighting Schemes (1)

The horse's body is sculpted with multi-color spots, positioned around the piece on the playa, and a few mounted onto the top of the sculpture.



LIGHTING SCHEMES (1)

Τροίαη Horse

trojan.evsc.net / trojan@evsc.net

Lighting Schemes (2)

Red Electroluminescent Wire is mounted around the edges of the horse's triangle skin. Separated in several parts, simple animations animate the red wireframe effect.



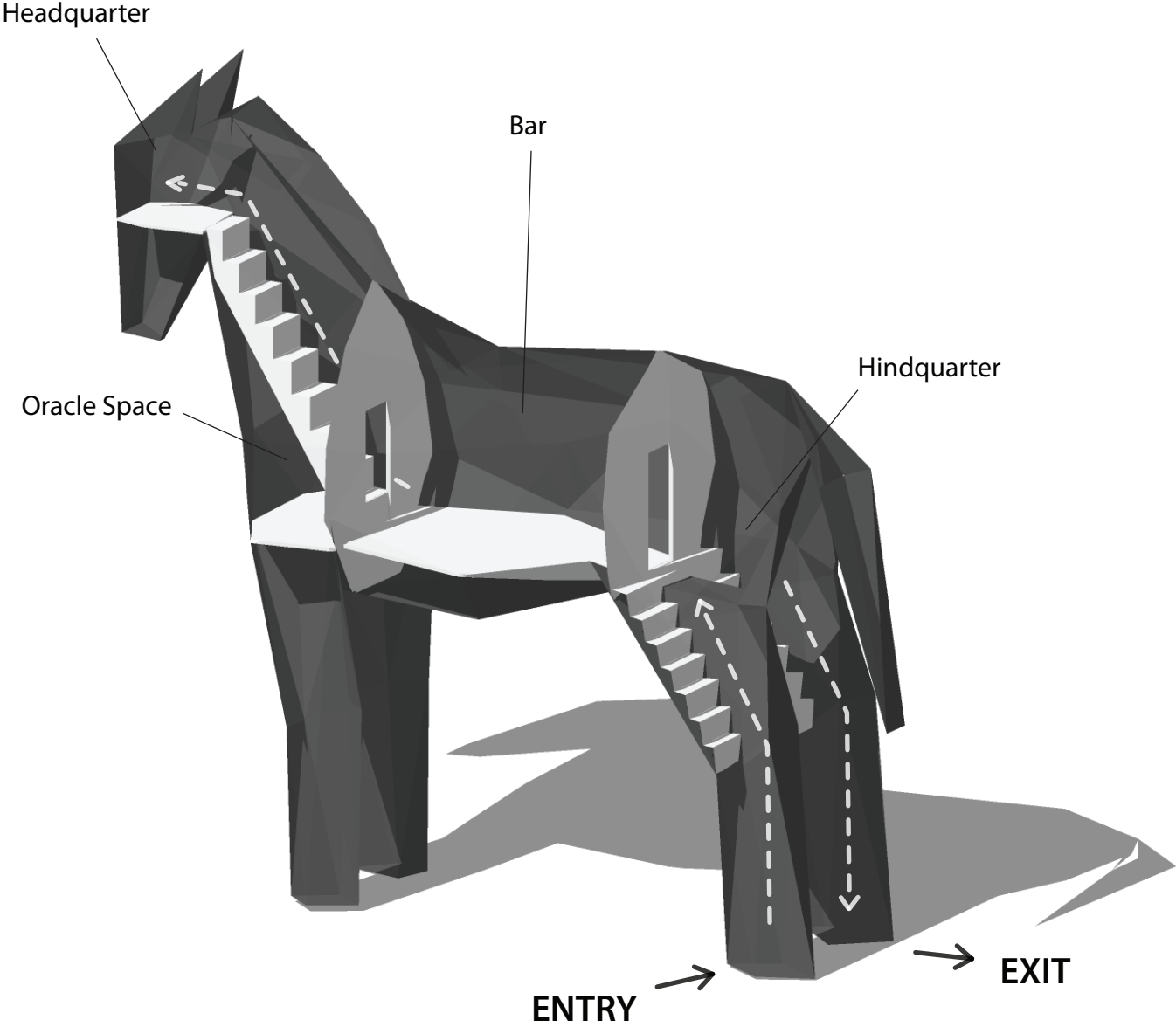
LIGHTING SCHEMES (2)

Τροία Horse

trojan.evsc.net / trojan@evsc.net

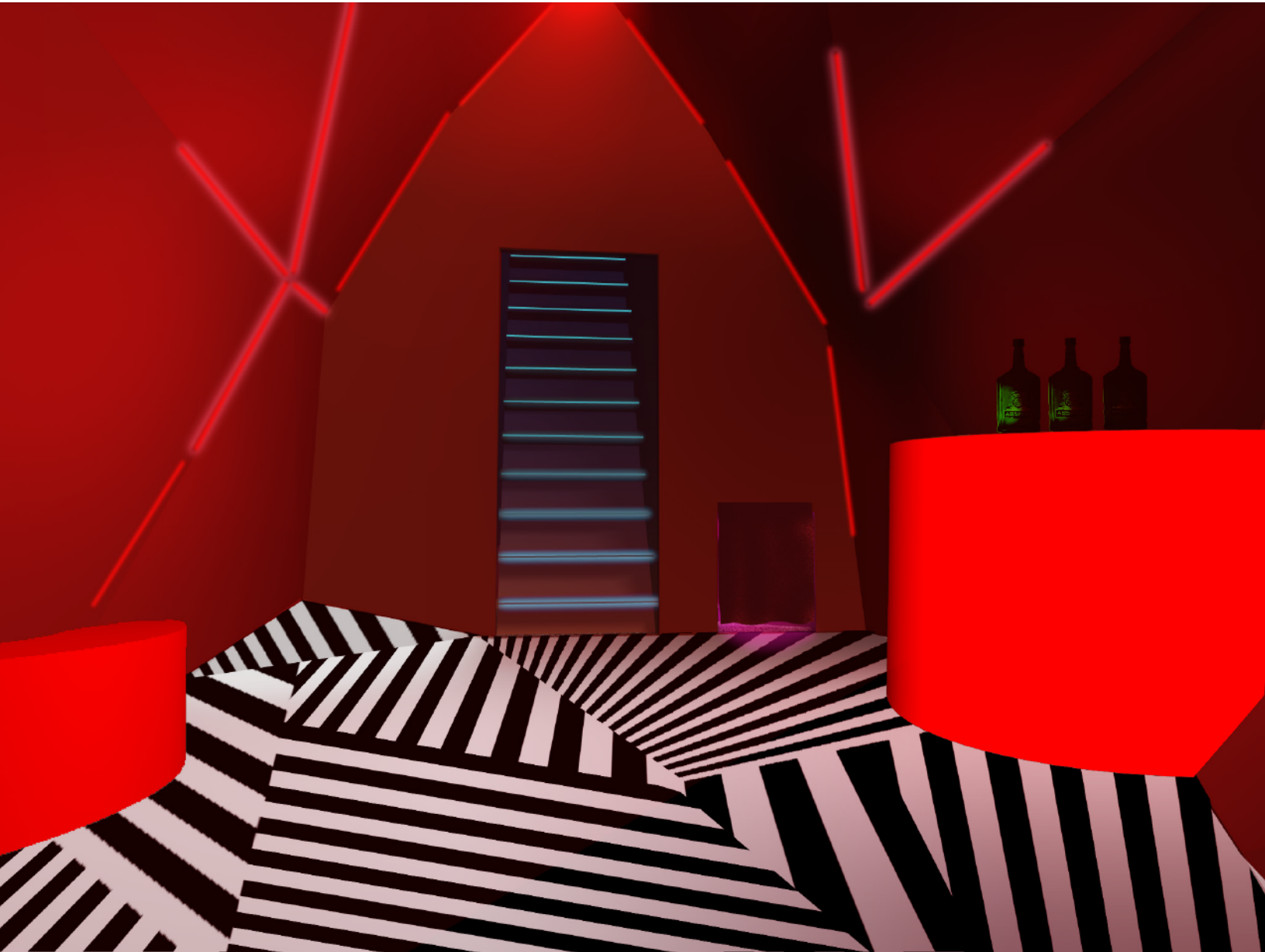
Horse Interior

The interior of the horse is divided into three very different rooms and an oracle space.



Bar Room

The belly of the beast will be a surrealistic bar designed to play with the mind and senses.



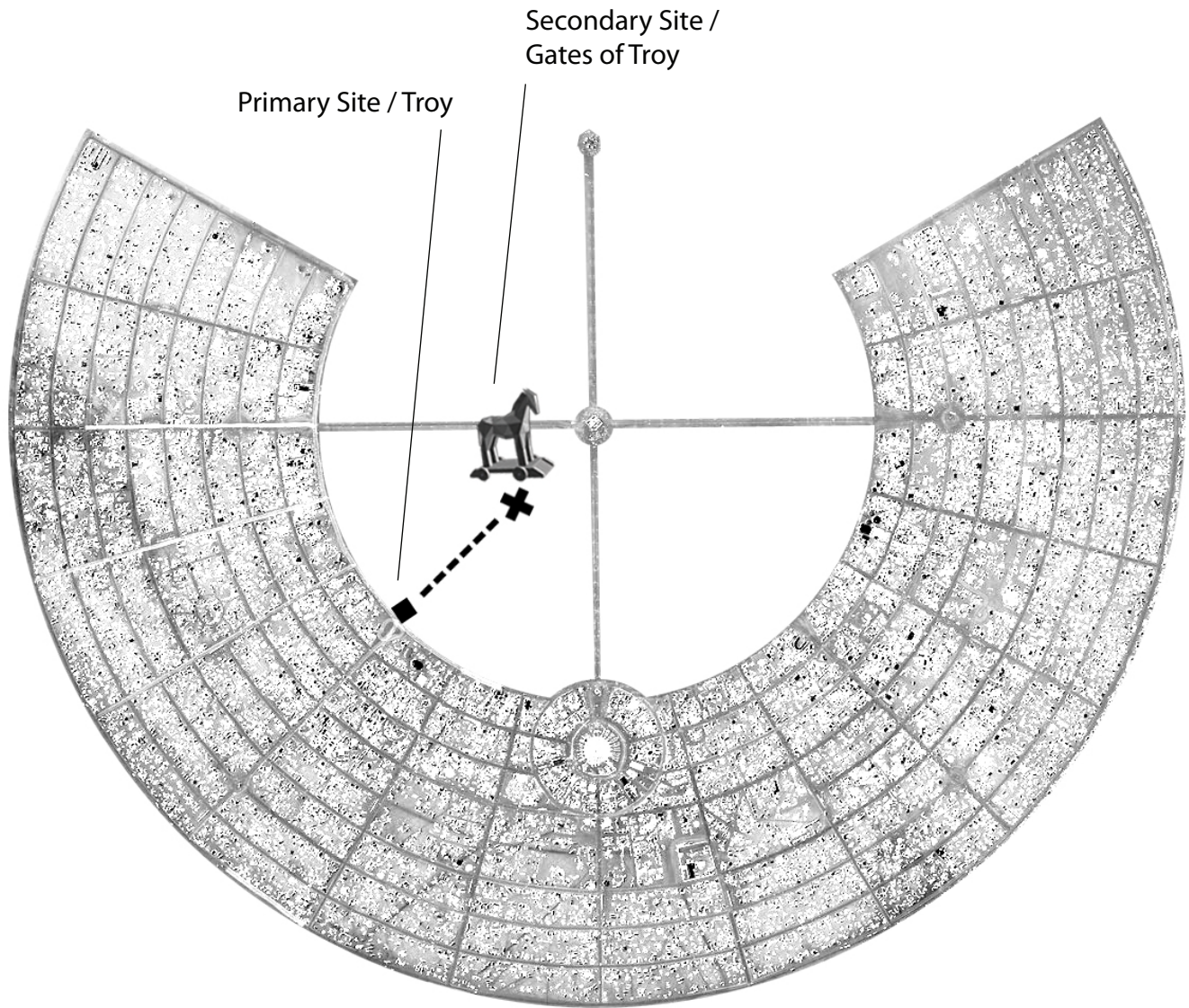
BAR ROOM

Τρόϊα Horse

trojan.evsc.net / trojan@evsc.net

Location

During the first days, the Trojan Horse is positioned ideally near the Esplanade between 4:30 to 7:30. On Friday the sculpture will be moved one kilometer into the playa and to the Secondary Site, the Gates of Troy.



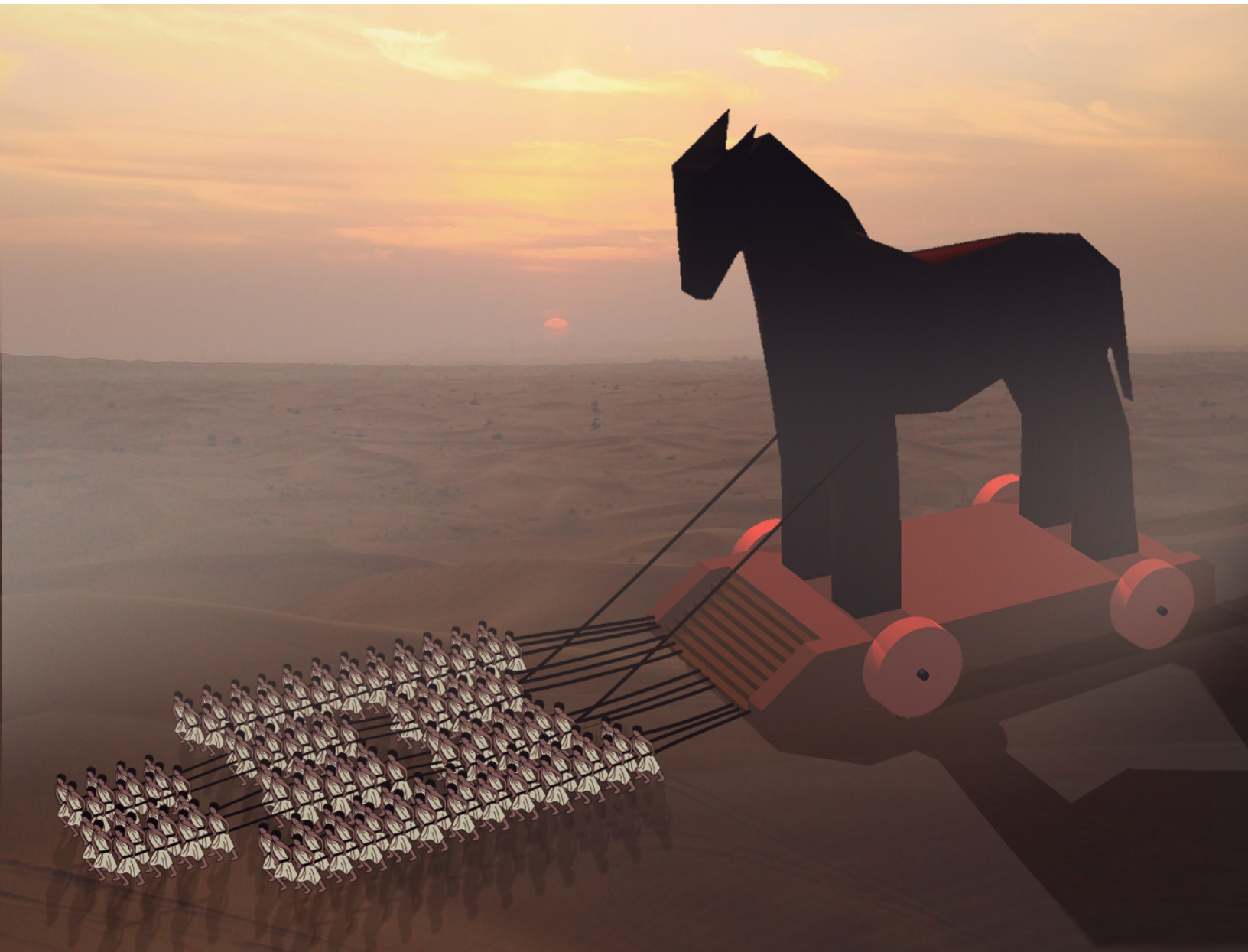
LOCATION

Τροίαν Ἴσση

trojan.evsc.net / trojan@evsc.net

Procession

The Trojan Horse will begin its last “rights” of passage on the fifth night of Burning Man at sundown. Columns of Burners will pull the 25-ton beast on its massive cart across the playa and toward Secondary Site / Gates of Troy.



PROCESSION

Τροϊανή Ἴσση

trojan.evsc.net / trojan@evsc.net

Secondary Site / Gates of Troy

On it's last day the Trojan Horse will be pulled one kilometer into the playa and to the Secondary Site - the Gates of Troy. Here the horse will be positioned on a burn shield.

